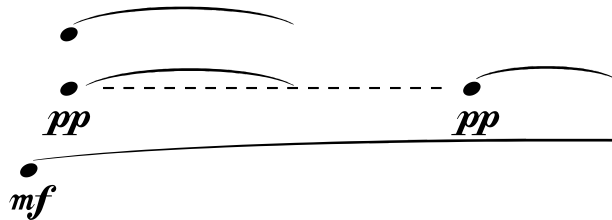
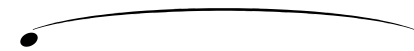
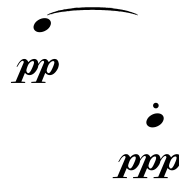
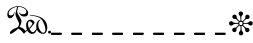
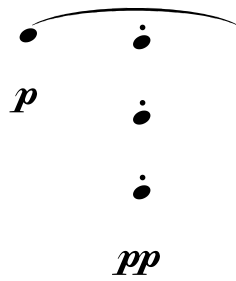
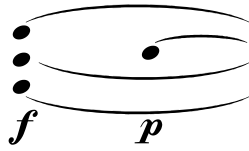


Sonata

(1979)

Keith E. Eisenbrey



mf *p* *mp*

pp *pp* *ppp*

pp

//

//

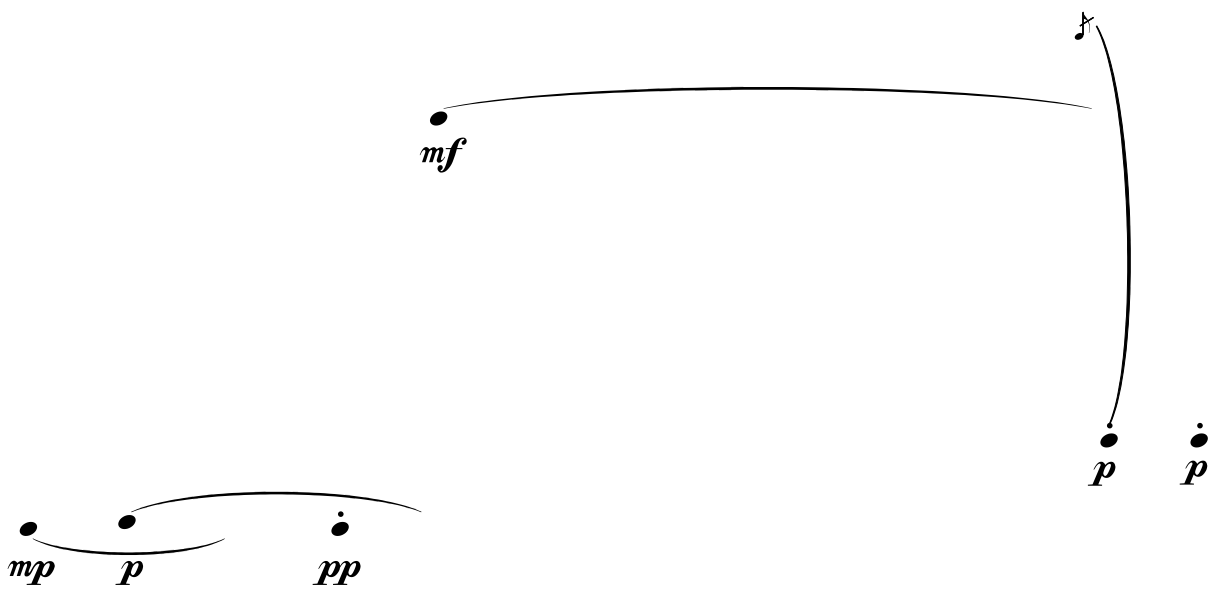
pp

p

pp



ppp



mf



p

ppp

fff

fff



A musical notation diagram showing a series of notes. On the left, a series of five notes are grouped by a large slur that curves downwards. The first note of this group has a dynamic marking of *p*. To the right of this group, a horizontal dashed line connects three dots, each with a dynamic marking of *p*. Above the first dot of this dashed line is a musical note with a slur above it. Above the second dot is a musical note with a slur above it. Above the third dot is a musical note with a slur above it. Above the first dot of the dashed line is also a musical note with a slur above it. Above the second dot is a musical note with a slur above it. Above the third dot is a musical note with a slur above it. Above the first dot of the dashed line is also a musical note with a slur above it. Above the second dot is a musical note with a slur above it. Above the third dot is a musical note with a slur above it.

mf *mf*

mp p

mf



f

pp

sempre *pp*

Red. _____
una corda _____



(Leo) _____
(una corda) _____

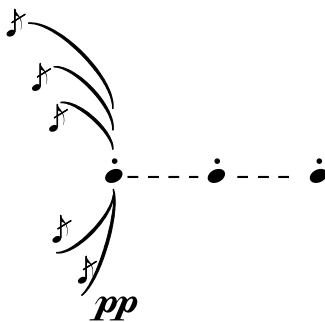


(Leo) _____
(una corda) _____

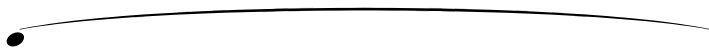
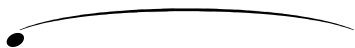


(*Leg.*) -----
(una corda) ----- *

mf



(*Leg.*) ----- *
ffff



f

•
f

ped ----- *
fff *fff*

•
p

A musical staff with a horizontal line. On the left, a note with a fermata is marked *f*. A curved line connects this note to a note below the staff marked *mf*. Another curved line connects the *mf* note to a note above the staff marked *mp*. A long horizontal line spans from the *f* note to the *mp* note.

Two notes with fermatas, one above the other, with the dynamic marking *ppp* below them.



A musical note with a fermata and a dynamic marking *f*.

A dashed horizontal line with the dynamic marking *ffff* at the start. Three 'V' marks are placed above the line.

•
•
ppp

(*Leg.*)-----*
fff

Leg.----- / / / / / / / / / / *
fff fine